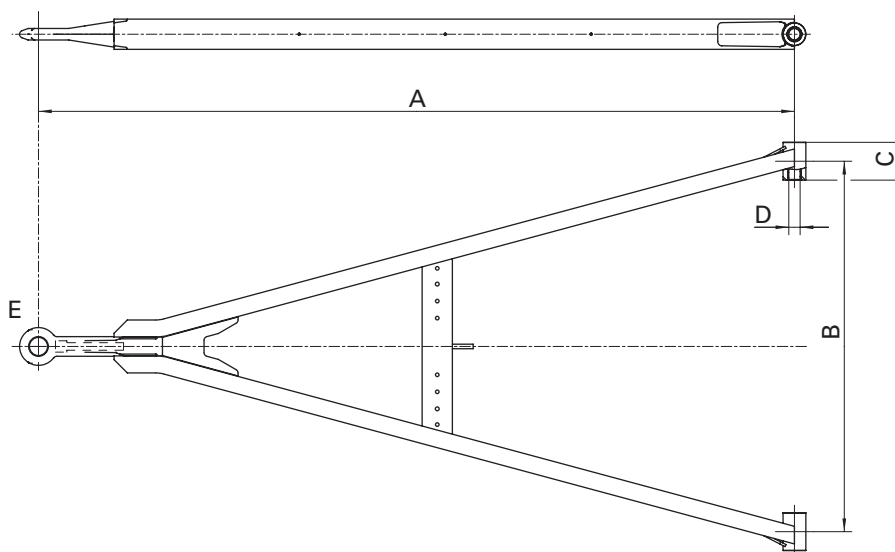






GNZ

- DE** Zuggabel Normalprofil
- EN** Drawbar standard profile
- FR** Flèche de remorque – profil standard
- IT** Timoni profilo normale
- ES** Perfil normal de la lanza-timón



| |  |  |  | D | EG/ECE | A | B | C | D | E |  |
|----|---|---|---|----------|---------------|-----------|----------|----------|----------|---------------|---|
| | | (t) | (t) | (kN) | | (mm) | (mm) | (mm) | (mm) | | |
| YA | GNZ 9,4 | 9,4 | 5 | 70 | E1 01-1964 | 650-750 | 320-1100 | 60-100 | 20-50 | 1,6 | U 50 |
| YA | GNZ 9,4 | 9,4 | 5 | 70 | E1 01-1964 | 800-1950 | 320-1250 | 60-100 | 20-50 | 1,6 | U 50 |
| YD | GNZ 18 | 16 | 8 | 98 | E1 01-1911 | 1000-2600 | 300-410 | 60-100 | 24-50 | 1,3,4,5,6,C,A | U 65 |
| YD | GNZ 18 | 18 | 10 | 98 | E1 01-1911 | 1000-1100 | 420-920 | 60-100 | 24-50 | 1,3,4,5,6,C,A | U 65 |
| YD | GNZ 18 | 18 | 10 | 98 | E1 01-1911 | 1150-1200 | 420-1050 | 60-100 | 24-50 | 1,3,4,5,6,C,A | U 65 |
| YD | GNZ 18 | 18 | 10 | 98 | E1 01-1911 | 1250-1400 | 420-1200 | 60-100 | 24-50 | 1,3,4,5,6,C,A | U 65 |
| YD | GNZ 18 | 18 | 10 | 98 | E1 01-1911 | 1450-2600 | 420-1400 | 60-100 | 24-50 | 1,3,4,5,6,C,A | U 65 |
| YG | GNZ 27 | 27 | 12 | 125 | E1 01-1909 | 1000-1700 | 250-1400 | 60-100 | 24-50 | 1,3,4,5,6,C | U 80 |
| YG | GNZ 27 | 27 | 12 | 125 | E1 01-1909 | 1750-2050 | 320-1400 | 60-100 | 24-50 | 1,3,4,5,6,C | U 80 |
| YG | GNZ 27 | 27 | 12 | 125 | E1 01-1909 | 2100-3100 | 320-1500 | 60-100 | 24-50 | 1,3,4,5,6,C | U 80 |
| YF | GNZ 40 A | 40 | 12 | 125 | E1 01-2001 | 1000-1850 | 200-590 | 70-100 | 26-50 | 1,3,4,5,6,C | U 100 |
| YF | GNZ 40 A | 40 | 12 | 125 | E1 01-2001 | 1900-3800 | 250-590 | 70-100 | 26-50 | 1,3,4,5,6,C | U 100 |
| YF | GNZ 40 A | 40 | 18 | 125 | E1 01-2001 | 1000-3800 | 600-1500 | 70-100 | 26-50 | 1,3,4,5,6,C | U 100 |
| YF | GNZ 40 B | 40 | 12 | 168 | E1 01-2021 | 1000-1750 | 200-590 | 70-100 | 30-50 | 3,4,5 | U 100 |
| YF | GNZ 40 B | 40 | 12 | 168 | E1 01-2021 | 1800-3300 | 250-590 | 70-100 | 30-50 | 3,4,5 | U 100 |
| YF | GNZ 40 B | 40 | 18 | 168 | E1 01-2021 | 1000-3300 | 600-1400 | 70-100 | 30-50 | 3,4,5 | U 100 |
| YC | GNZ 50 | 50 | 18 | 190 | E1 01-2022 | 1200-3800 | 400-590 | 70-100 | 30-50 | 3,5 | U 100 |
| YC | GNZ 50 | 50 | 24 | 190 | E1 01-2022 | 1200-3800 | 600-1400 | 70-100 | 30-50 | 3,5 | U 100 |
| YB | GNZ 50 HD | 60 | 24 | 206 | E1 01-2676 | 1600-3400 | 900-1400 | 70-100 | 30-50 | 3,5 | U 100 |